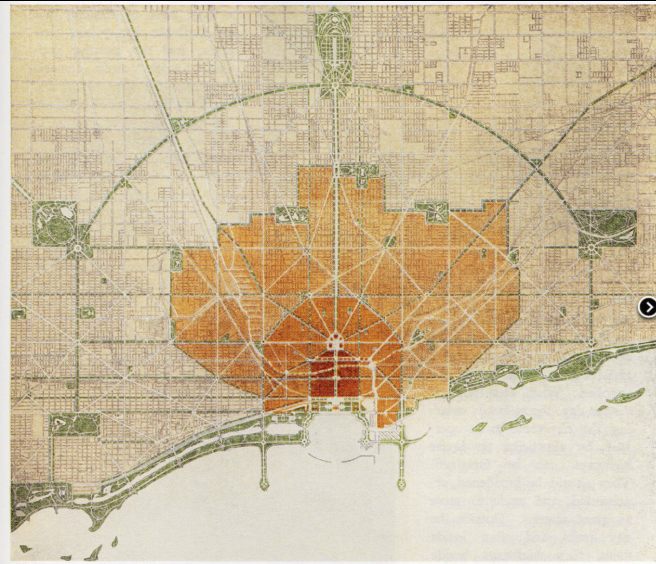


From New Church Architecture to City Beautiful

Paul Eli Ivey
University of Arizona



COPYRIGHT, 1887, BY COMMERCIAL CLUB OF CHICAGO
CIII. CHICAGO. PLAN OF THE CITY, SHOWING THE GENERAL SYSTEM OF BOULEVARDS AND PARKS EXISTING AND PROPOSED.
The boulevards are planned to form a continuous system of circulation; the parks are related closely to the boulevard system, and are located, wherever possible, in connection with them.



A
DICTIONARY
 OF
CORRESPONDENCES, REPRESENTATIVES,
 AND SIGNIFICATIVES,

DERIVED FROM THE WORD OF THE LORD.

EXTRACTED FROM THE WRITINGS OF

EMANUEL SWEDENBORG.

*Compiled by
 Charles Bollen.*

SIXTH EDITION.

BOSTON:
CARTER AND PETTEE.
 1872.



SWEDENBORG'S
DOCTRINE OF CORRESPONDENCE

SWEDENBORG'S
DOCTRINE OF CORRESPONDENCE

A KEY TO THE INTERPRETATION BETWEEN
 THE SPIRITUAL AND NATURAL

BY REV. C. BOLLEN



WESTERN NEW-ENGLAND LIBRARY

as their feasts,—such as the feast of unleavened bread, the feast of tabernacles, the feast of first-fruits;—and the priesthood of Aaron and the Levites, and their garments of holiness; and besides these, all their statutes and judgments, which related to their worship and life, were correspondences. Now, since Divine things present themselves in the world by correspondences, therefore the Word was written by pure correspondences. For the same reason the Lord, as He spake from the Divine spake by correspondences; for whatever is from the Divine descends into such things in nature as correspond to the Divine, and which then conceal things Divine, which are called celestial and spiritual, in their bosom."

"Without the spiritual sense," says he in another place, "no one could know why the Prophet Jeremiah was commanded to buy himself a girdle and put it on his loins, and not to draw it through the waters, but to hide it in the hole of a rock by the Euphrates (Jer. xiii. 1-7) or why the Prophet Isaiah was commanded to loose the sackcloth from off his loins, and put off the shoe from off his foot, and to go naked and barefoot three years (Isaiah xx. 2, 3); or why the Prophet Ezekiel was commanded to pass a razor upon his head and upon his beard, and afterwards to divide [the hairs of] them and burn a third part in the midst of the city, smite a third part with the sword, scatter a third part in the wind, and bind a little of them in his skirts, and at last to cast them into the midst of the fire (Ezek. vi. 4); or why the same prophet was commanded to lie upon his left side three hundred and ninety days, and upon his right side forty days; and to make him a cake of wheat and barley and millet and fitches, with cow's dung, and eat it, and in the mean time to raise a rampart and a mound against Jerusalem and besiege it (Ezek. iv. 1-3); or why the Prophet Hosea was twice commanded to take to himself a harlot to wife (Hosea i. 2-9, iii. 2, 3); and many such things. Moreover, who, without the spiritual sense, would know what is signified by all things belonging to the tabernacle,—by the ark, the mercy-seat, the cherubim, the candle-stick, the altar of incense, the bread of faces on the table, and its veils and curtains? Or who,

 **THE SCIENCE OF CORRESPONDENCES**



- Home
- DICTIONARY
- HEAVEN
- EARTH
- DIVINE HUMAN
- THE WORD
- PLACES
- PERSONS
- ANIMALS
- PLANTS
- MINERALS
- NUMBERS



PLACES

Ancient Church

Caves

Christian Church

Church

Cities

Countries

**TABERNACLE >> Ark + Habitation + Court >> Three Degrees of Life
 >> Celestial Heaven + Spiritual Heaven + Natural Heaven**

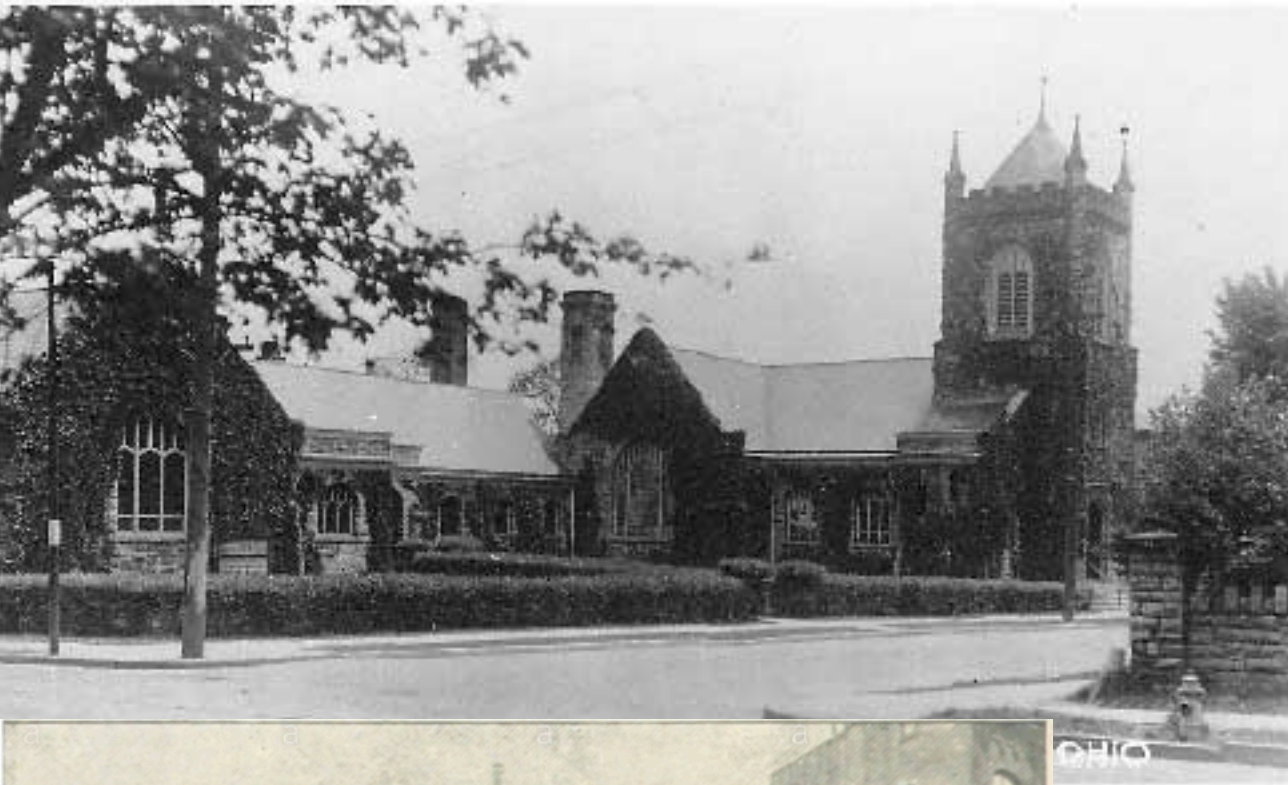
A house with its furnishings is an expression of the use which is done in it. Is there a special use expressed by a church with its kneeling cushions, its pulpit, its baptismal font, and communion table? Does not the church suggest worship with its humble prayer, its instruction, its repentance, and reception of strength from the Lord? Which, in the Lord's sight, is the church, the material building, or the holy states of worship which it expresses and promotes? "Will God, indeed, dwell on the earth? Behold, the heaven and heaven of heavens cannot contain thee; how much less this house that I have builded?" (1 Kings viii. 27; AC 9457)



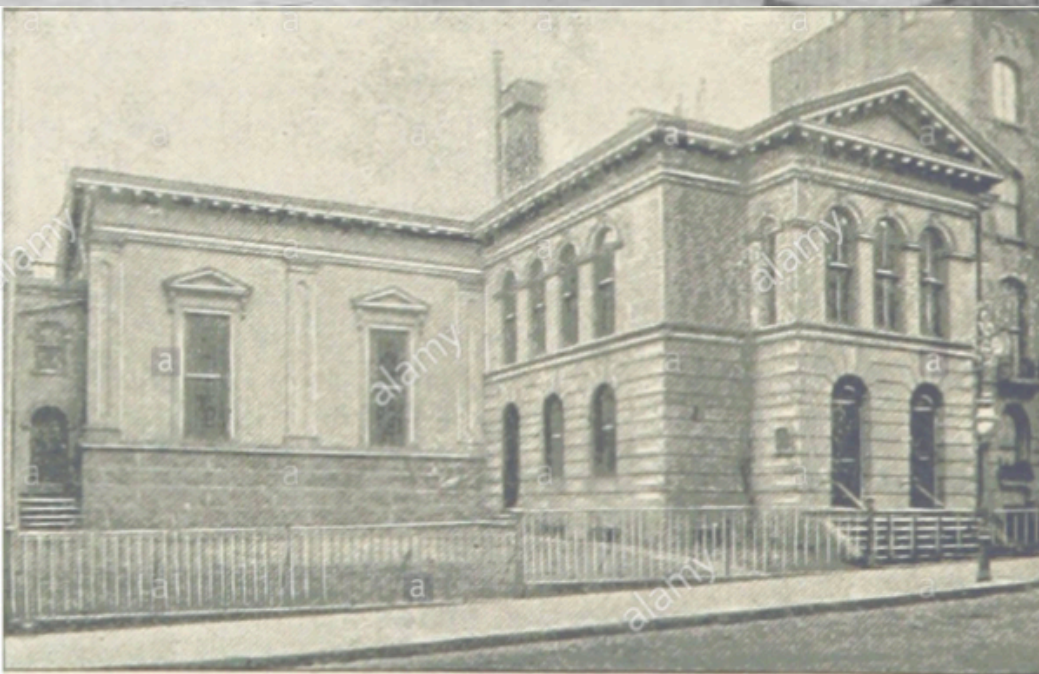


Cass Gilbert,
Virginia Street
Church, St. Paul,
1886
Shingle Style





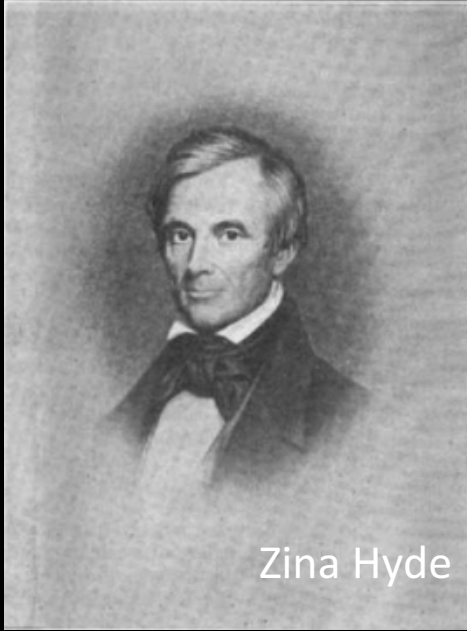
New Church, Cincinnati,
1902, razed 1964
English Gothic



CHURCH OF THE NEW JERUSALEM, SWEDENBORGIAN, 114 EAST 35TH STREET.



James Hoe, New York New Church, 1858
Classical/Renaissance Italianate



Zina Hyde



Zina Hyde, Alden Bradford Farnham,
Church of the New Jerusalem, Bath, ME,
1844, 1920

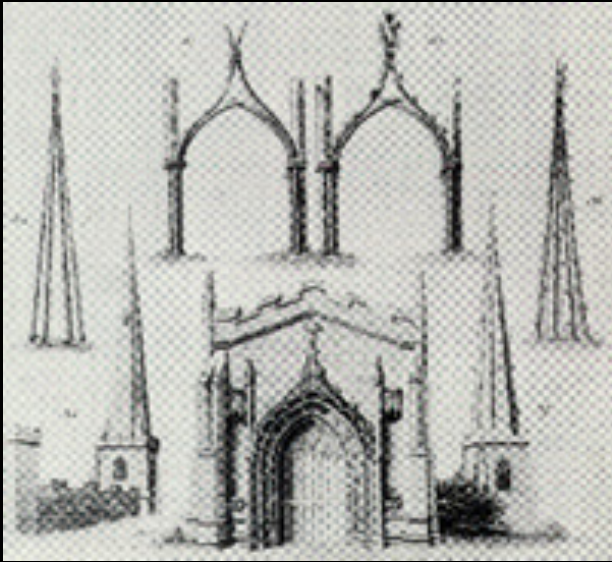
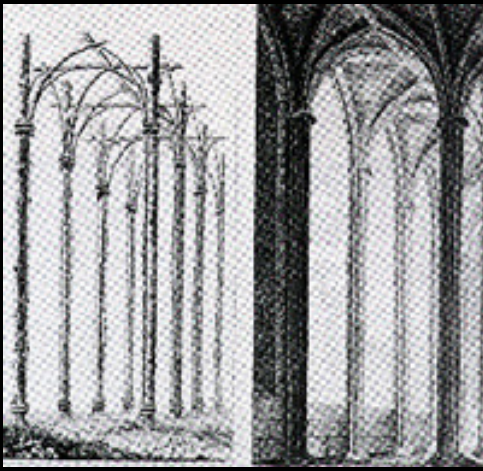


Joachim Murat, Saint Francis of Paola, 1816

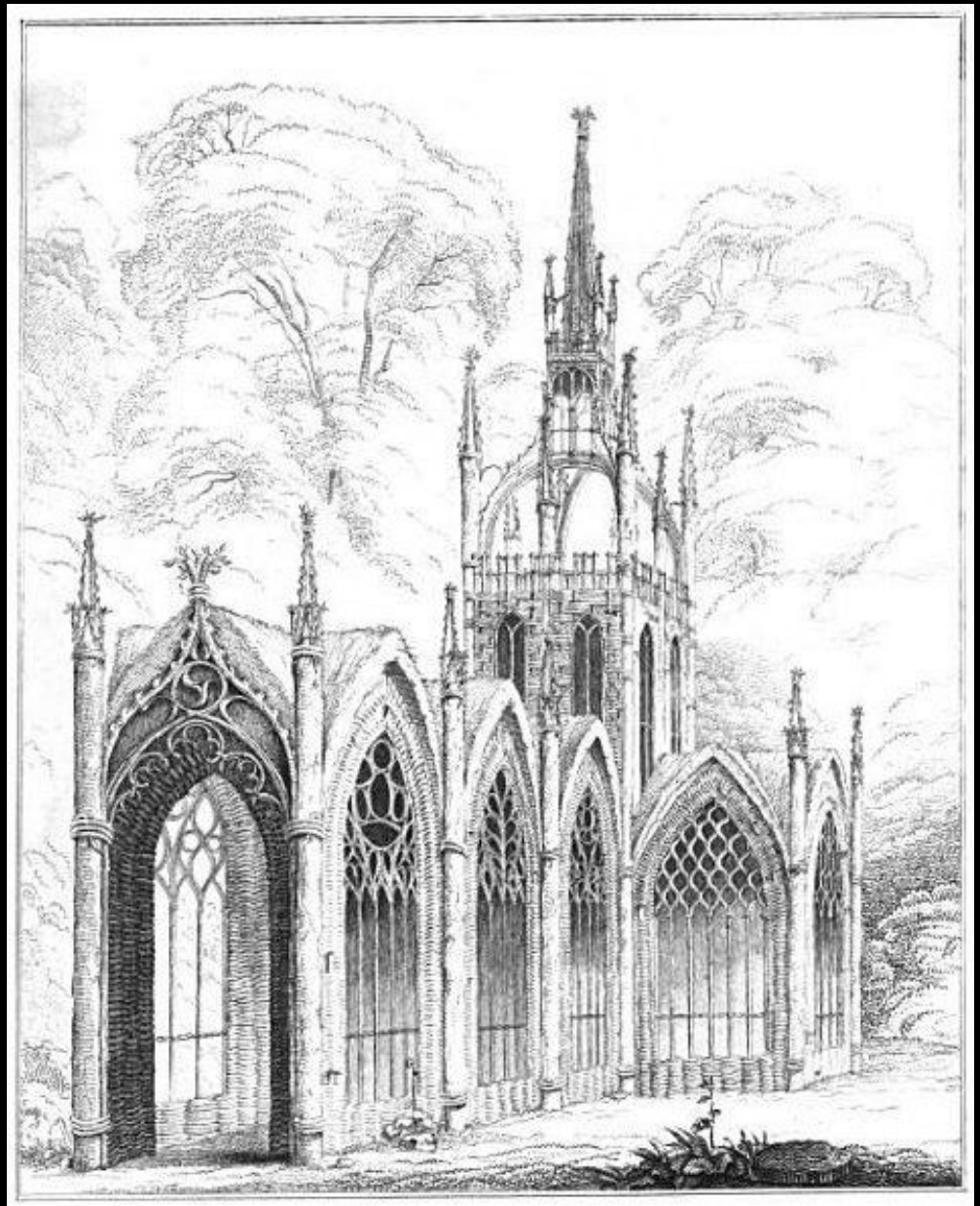


1843

CHURCH
of the
NEW JERUSALEM
Sunday Service
10:30 AM
A
BRETHREN
CHURCH



Sir James Hall, [Timber] Origins of Gothic Architecture, 1792



Sir James Hall, the "Gothic Hut," or "Willow Cathedral," 1792



Joseph Worcester, Bernard Maybeck, A. Page Brown, A. C. Schwienfurth,
Swedenborgian Church of San Francisco, 1895



SWEEHERMAN
CHURCH
PHIL LYNN

Small plaque on the wall to the right of the entrance.







Swedenborgian Church, San Francisco (1895)





Madrone rafters



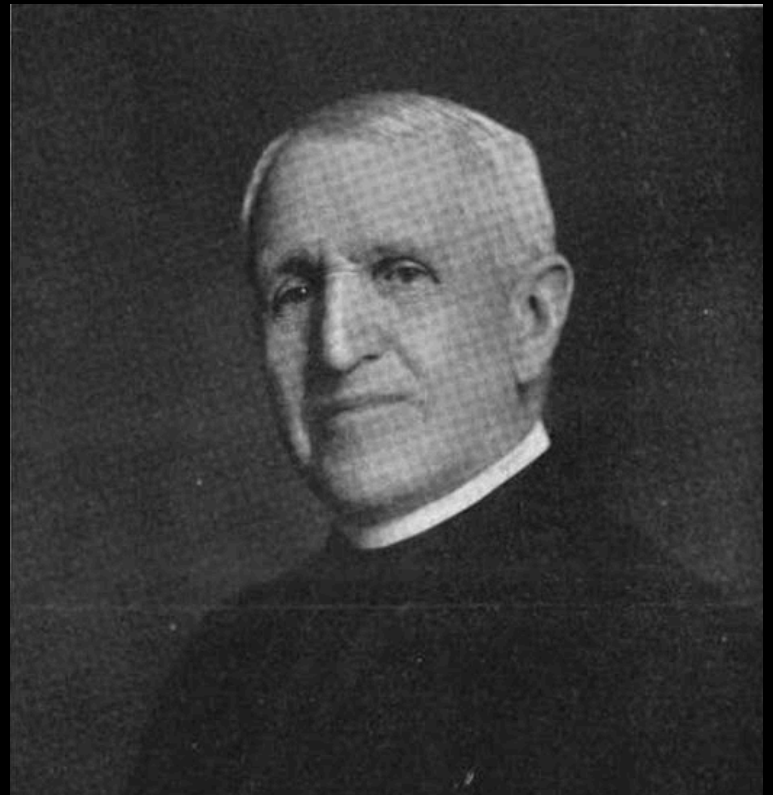
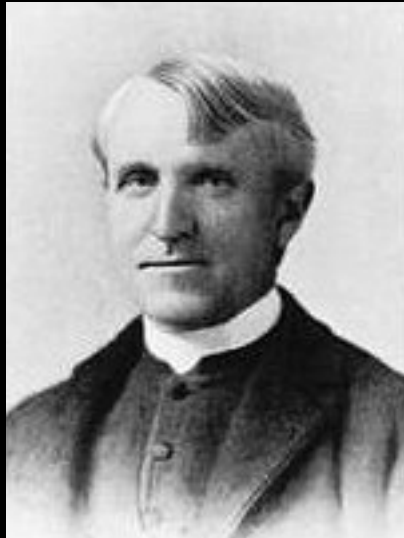




Frank Sewall, D. D.
President of Urbana
University
1870-1886

Born: September 24,
1837, Bath, Maine

Died: December 7,
1915, Washington, D. C.





John B. Wilson, New Jerusalem Church, Glasgow, Scotland, 1888
Early English Gothic,
12 condominiums since 1998



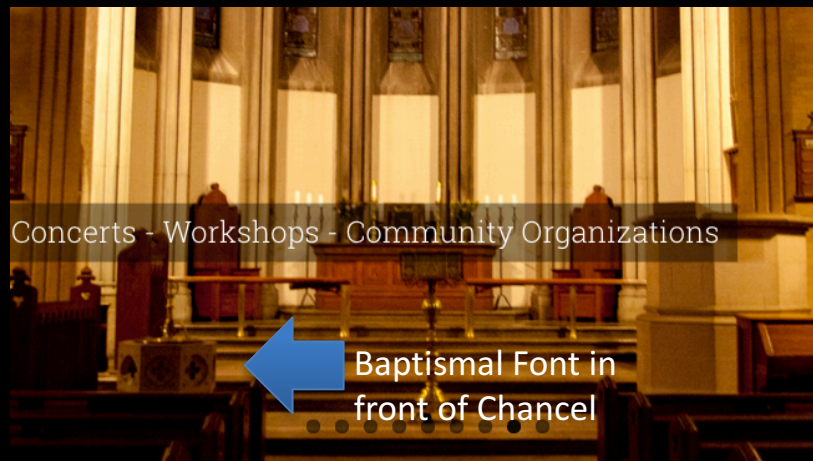
Herbert Langford Warren, Swedenborg Chapel,
Cambridge, MA, 1901
English Gothic parish church





Harold Thorpe Carswell, Pittsburgh New Church, 1929

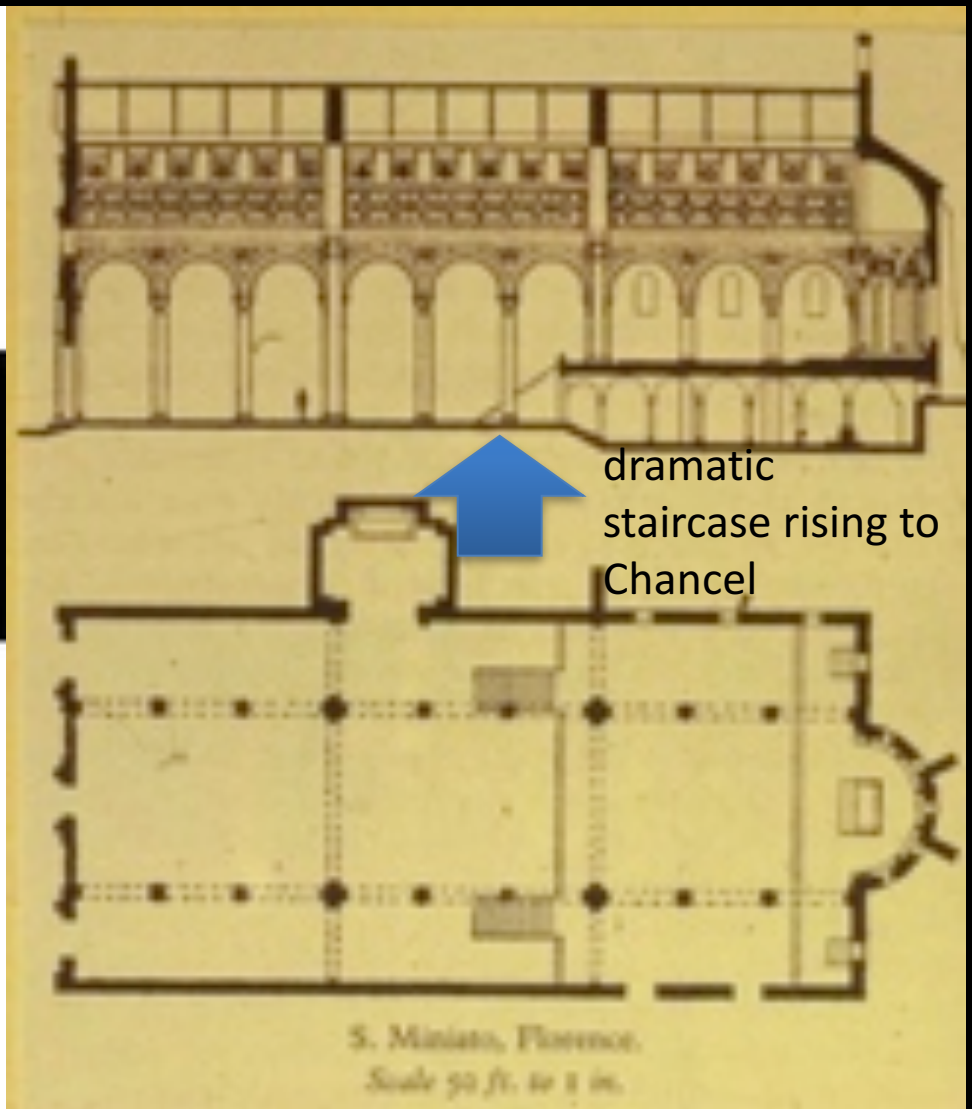
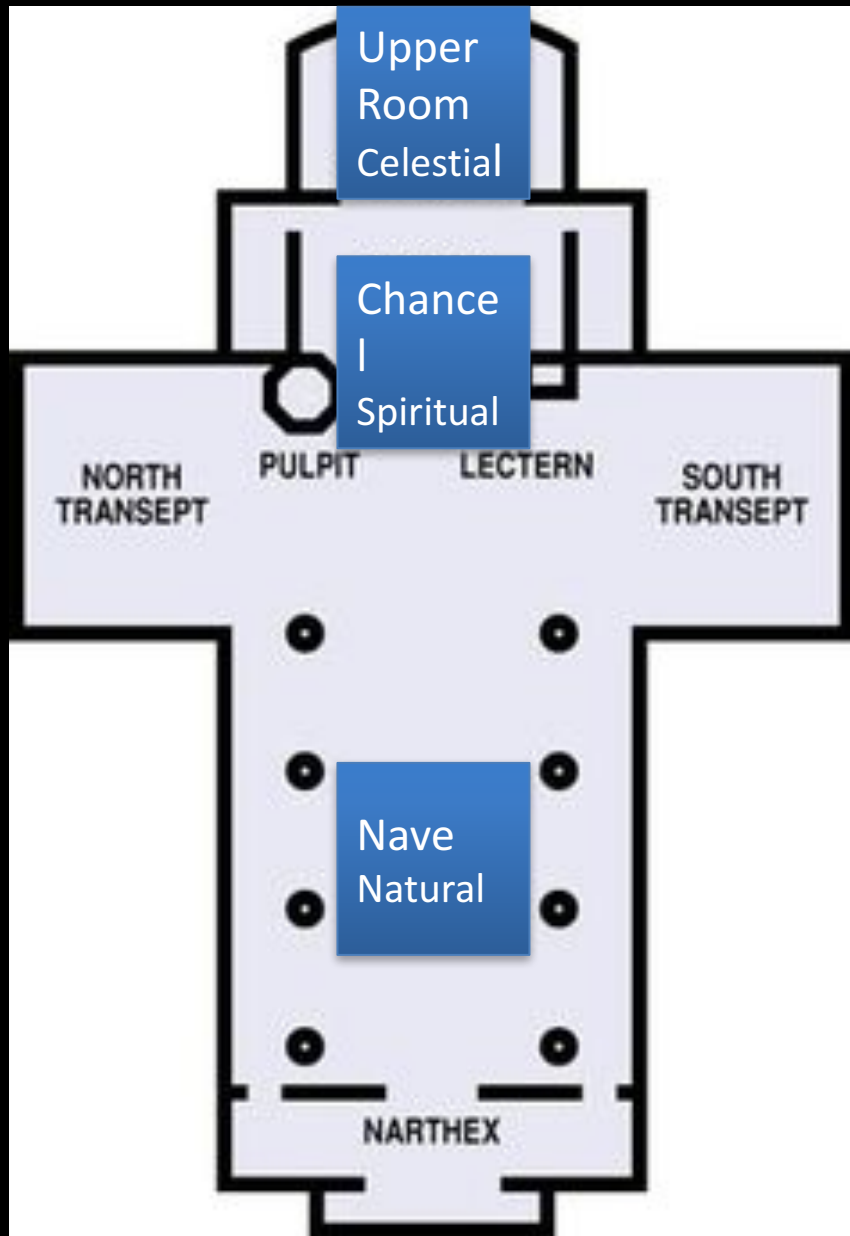
H. Langford Warren,
Church of the Holy City,
Washington, D. C., 1896



Concerts - Workshops - Community Organizations

Baptismal Font in
front of Chancel

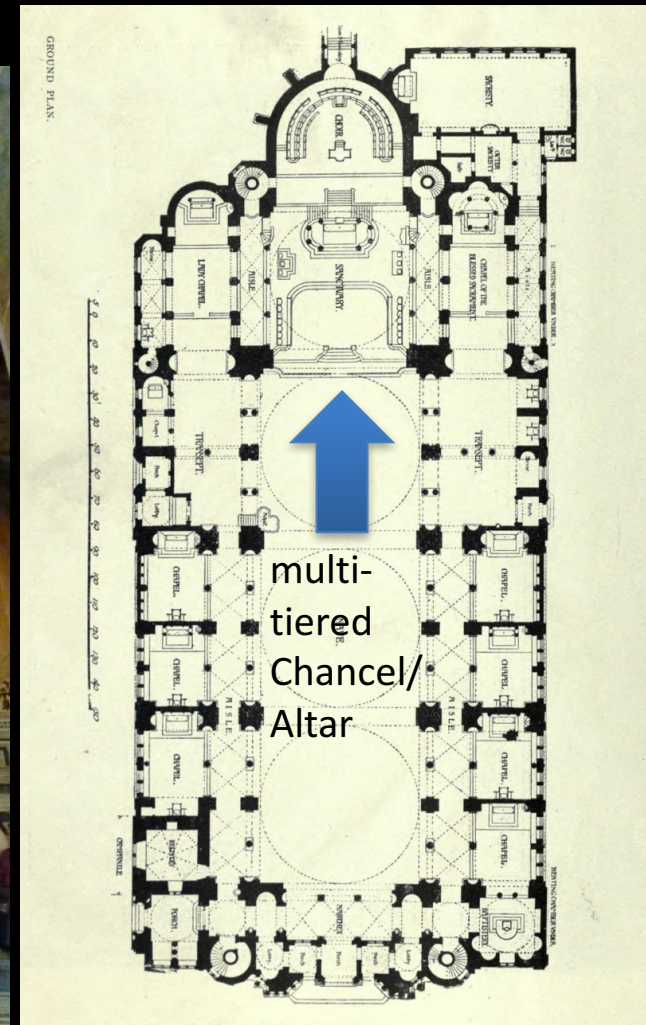




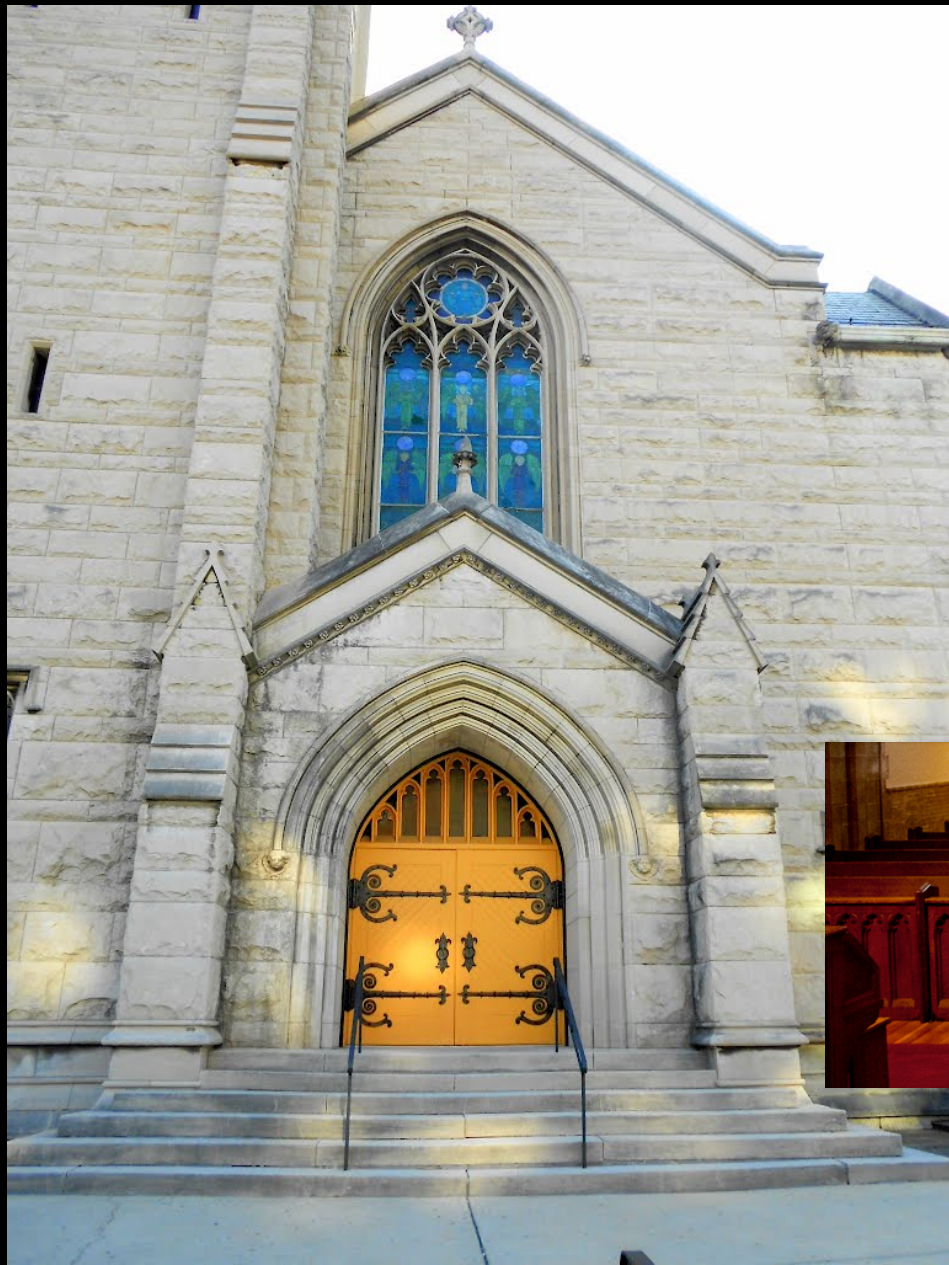
San Miniato al Monte, Florence, 1018



San Miniato al Monte, Florence, 1018



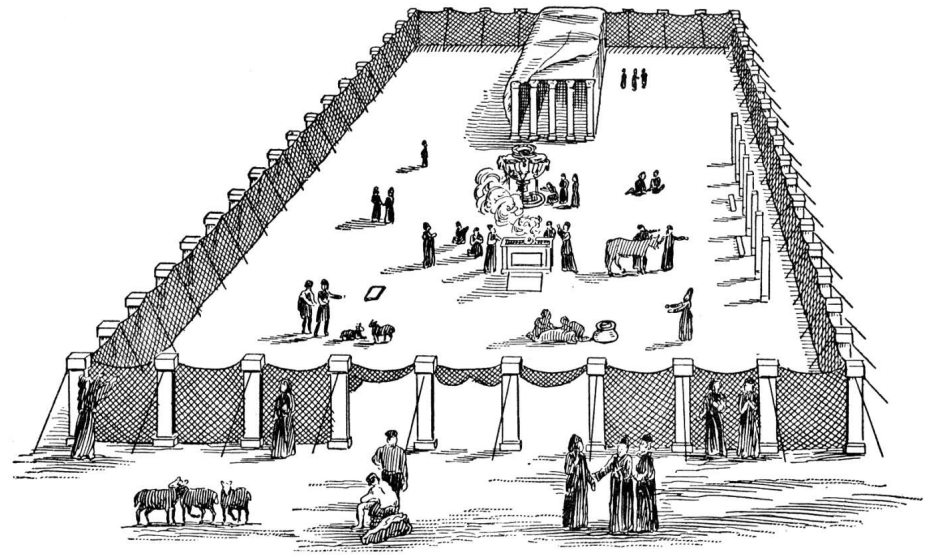
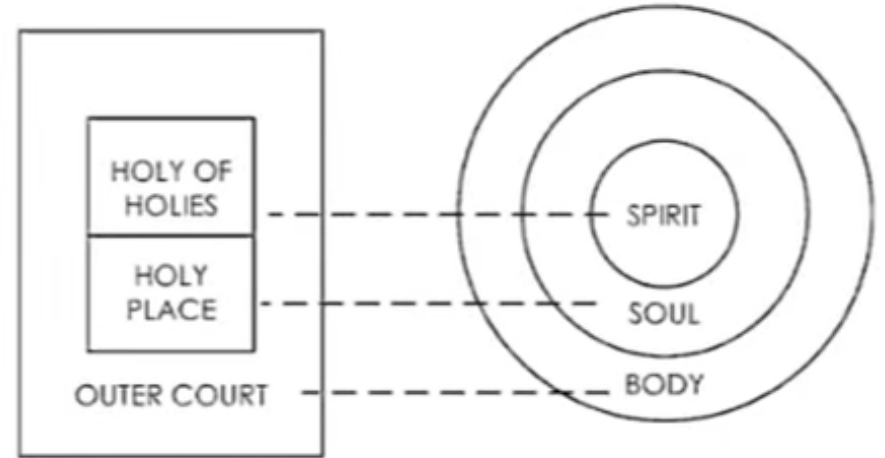
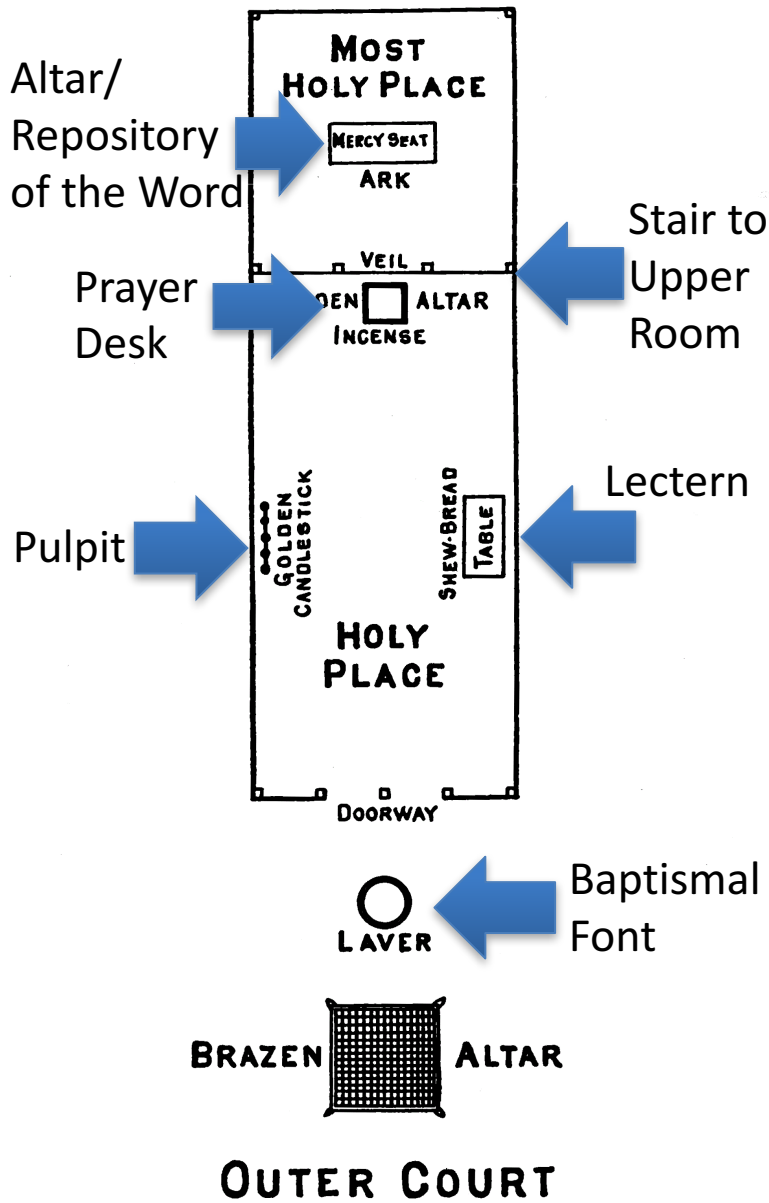
John Francis Bentley,
Westminster
Cathedral, London, 1903
Byzantine



The Church of The Holy City - Washington, DC

Wethey's correspondential plan

THE TABERNACLE



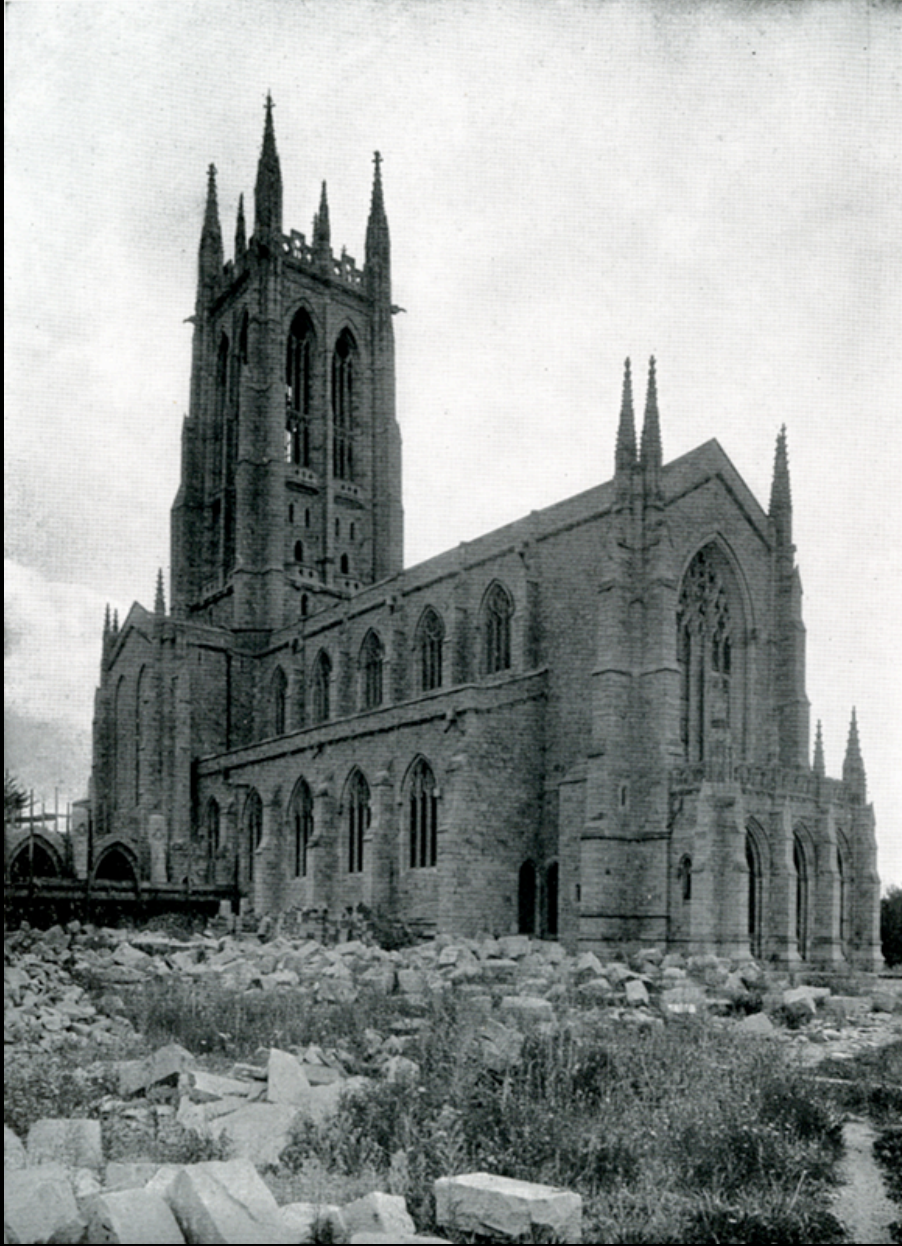
Clarence Larkin, *The Tabernacle, Dispensational Truth or God's Plan and Purpose in the Ages*, 1918



Frank Sewall and Thomas Allison,
Urbana Society of the New Church, 1880



Ralph Adams Cram, Church of the Open Word,
Newtonville, MA, 1893



Cram and Ferguson (1913-1917), Raymond Pitcairn, Harold Carswell, Frank Parziale, E. Donald Robb, Robert Tappan, and John Walker (1916-1919), Church of the New Jerusalem, Bryn Athyn, PA

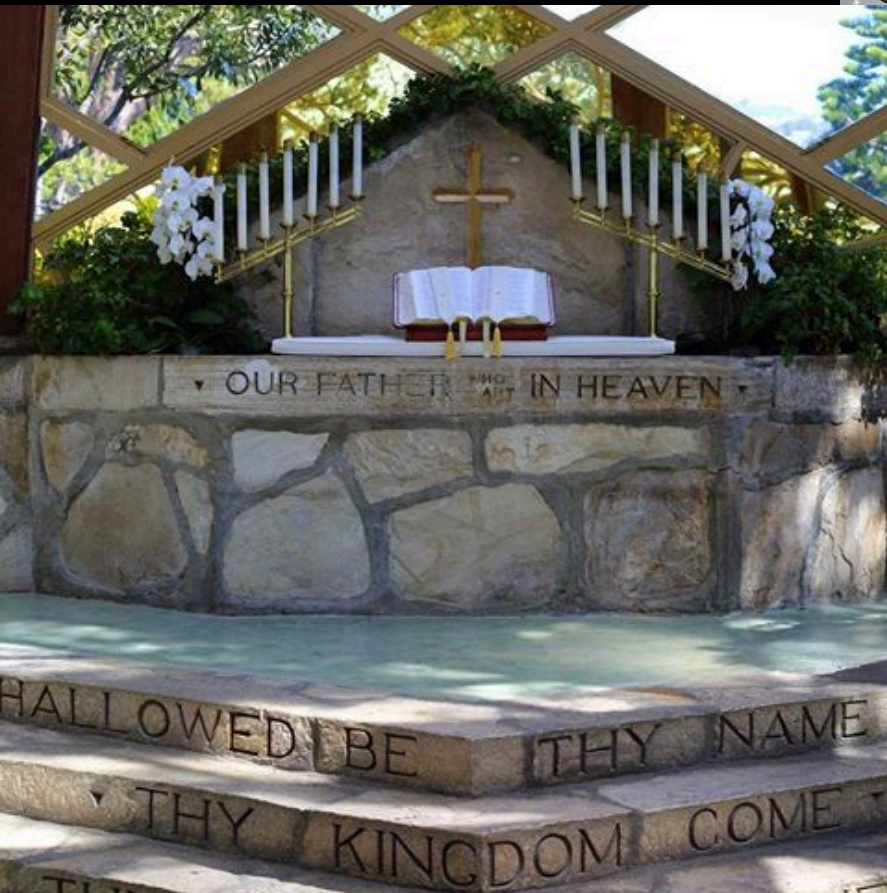


Lloyd Wright,
Wayfarer's Chapel,
Palos Verdes, 1951



Trees now tower over the transparent structure.





**SOUVENIR
SWEDENBORGIAN
EXHIBIT**

**NEW YORK
WORLD'S
FAIR
1964-1965
IN THE**



Protestant and Orthodox Center

“The Swedenborgian Exhibit is a representation of the renowned Wayfarers’ Chapel, which was designed by Lloyd Wright and erected to the memory of Emanuel Swedenborg.”

**THE CHURCH
OF THE NEW
JERUSALEM
SWEDENBORGIAN**

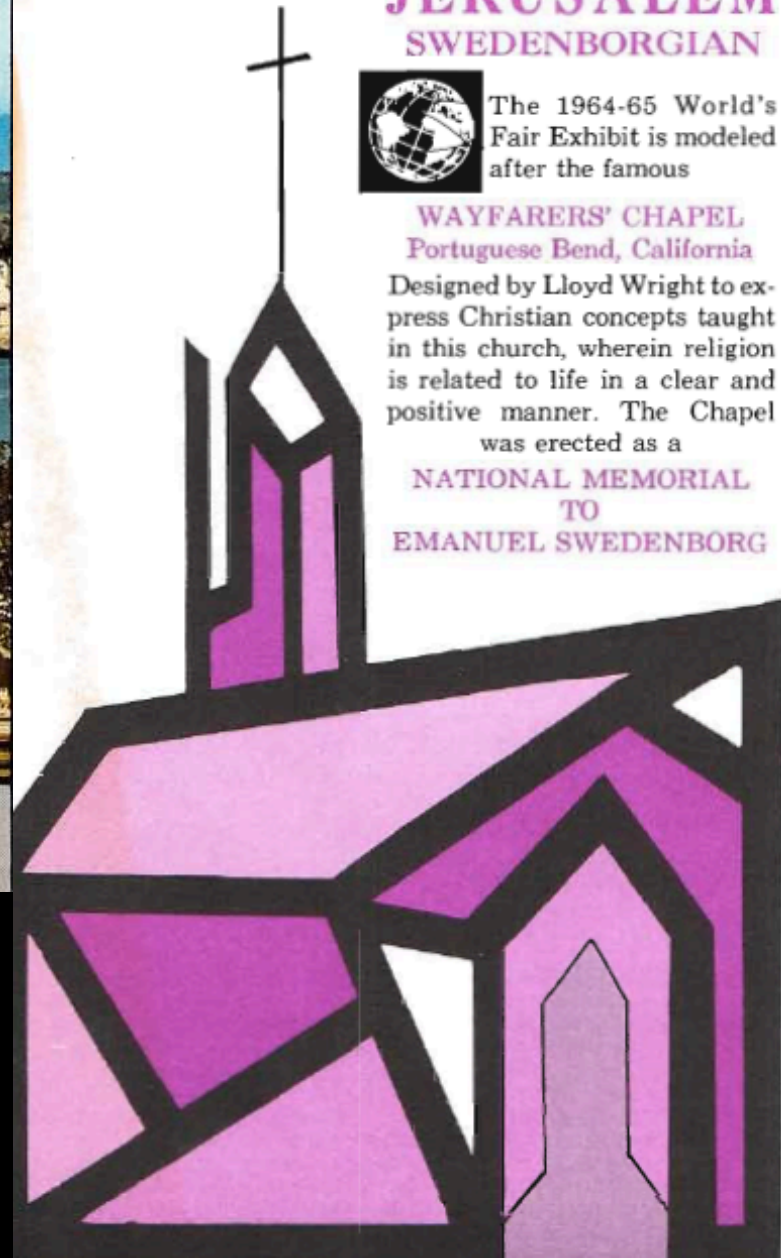


The 1964-65 World's Fair Exhibit is modeled after the famous

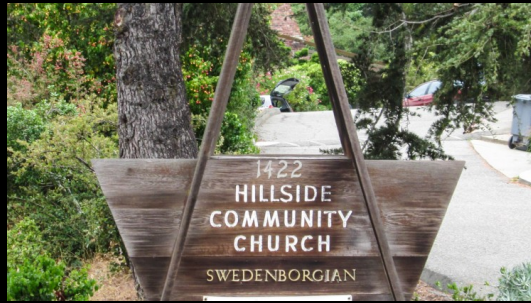
**WAYFARERS' CHAPEL
Portuguese Bend, California**

Designed by Lloyd Wright to express Christian concepts taught in this church, wherein religion is related to life in a clear and positive manner. The Chapel was erected as a

**NATIONAL MEMORIAL
TO
EMANUEL SWEDENBORG**



Hillside Community
Church, El Cerrito, CA
1951





Leslie Black & Erwin Carl Schmidt,
Church of the Open Word,
Garden Chapel,
St. Louis, MO, 1958



World's Columbian Exposition, 1893, Chicago

M557:--BEAUTIFUL MALL FROM LINCOLN MEMORIAL



TOWARDS THE CAPITOL, WASHINGTON, D. C. 42099



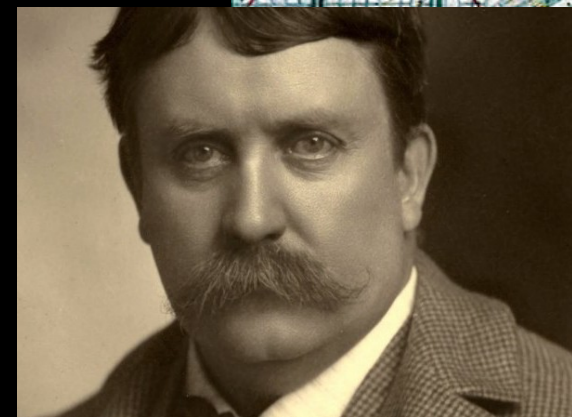
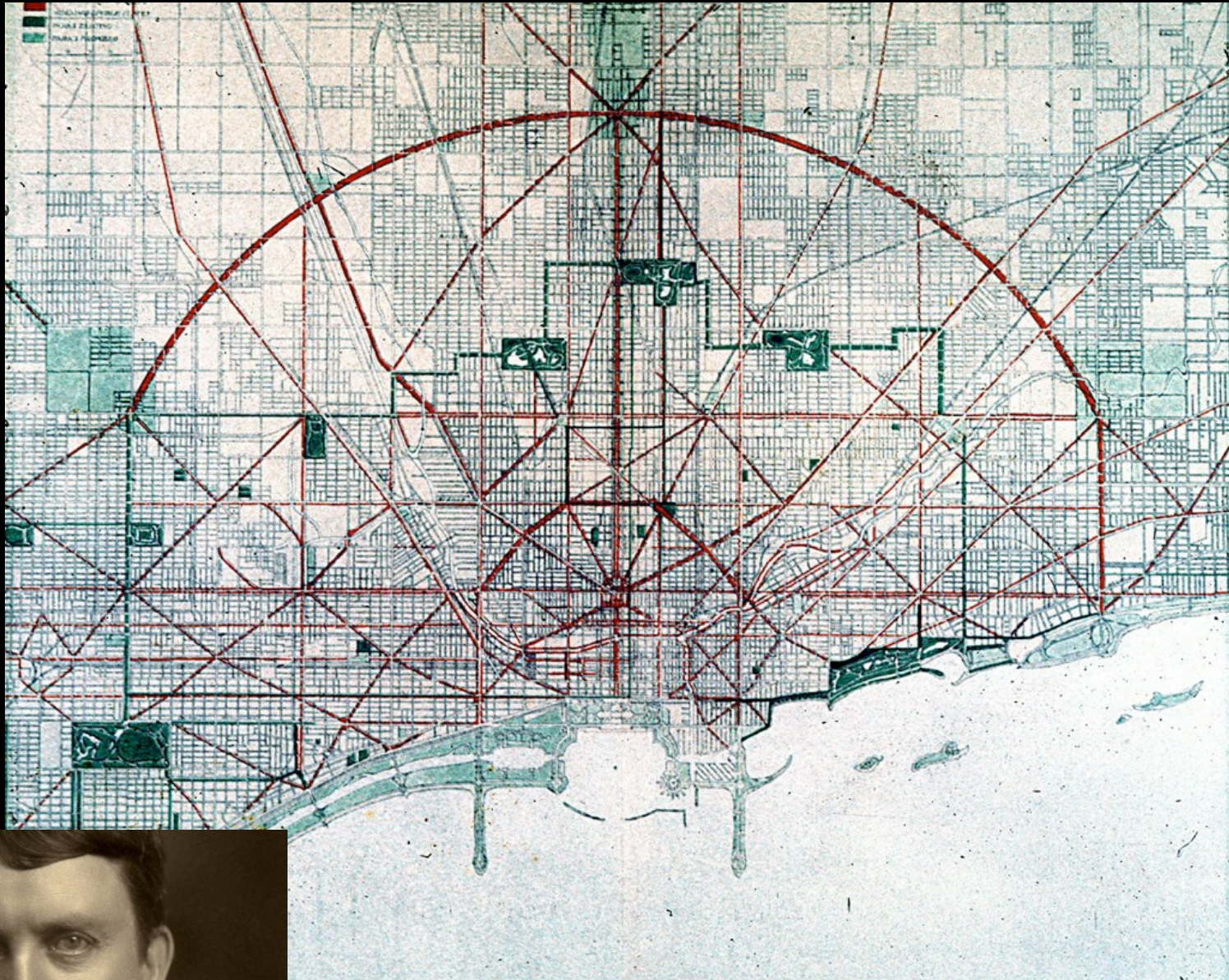
Bird's-eye View from City Hall, showing Benjamin Franklin Parkway, Philadelphia, Pa.

Benjamin Franklin Parkway, Philadelphia, 1903-1914

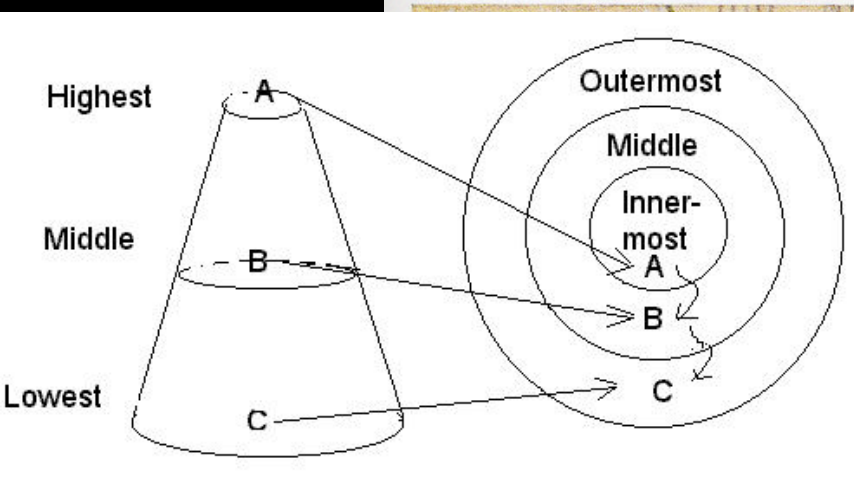


Jules Guérin, Plan of Chicago, 1909 illustration

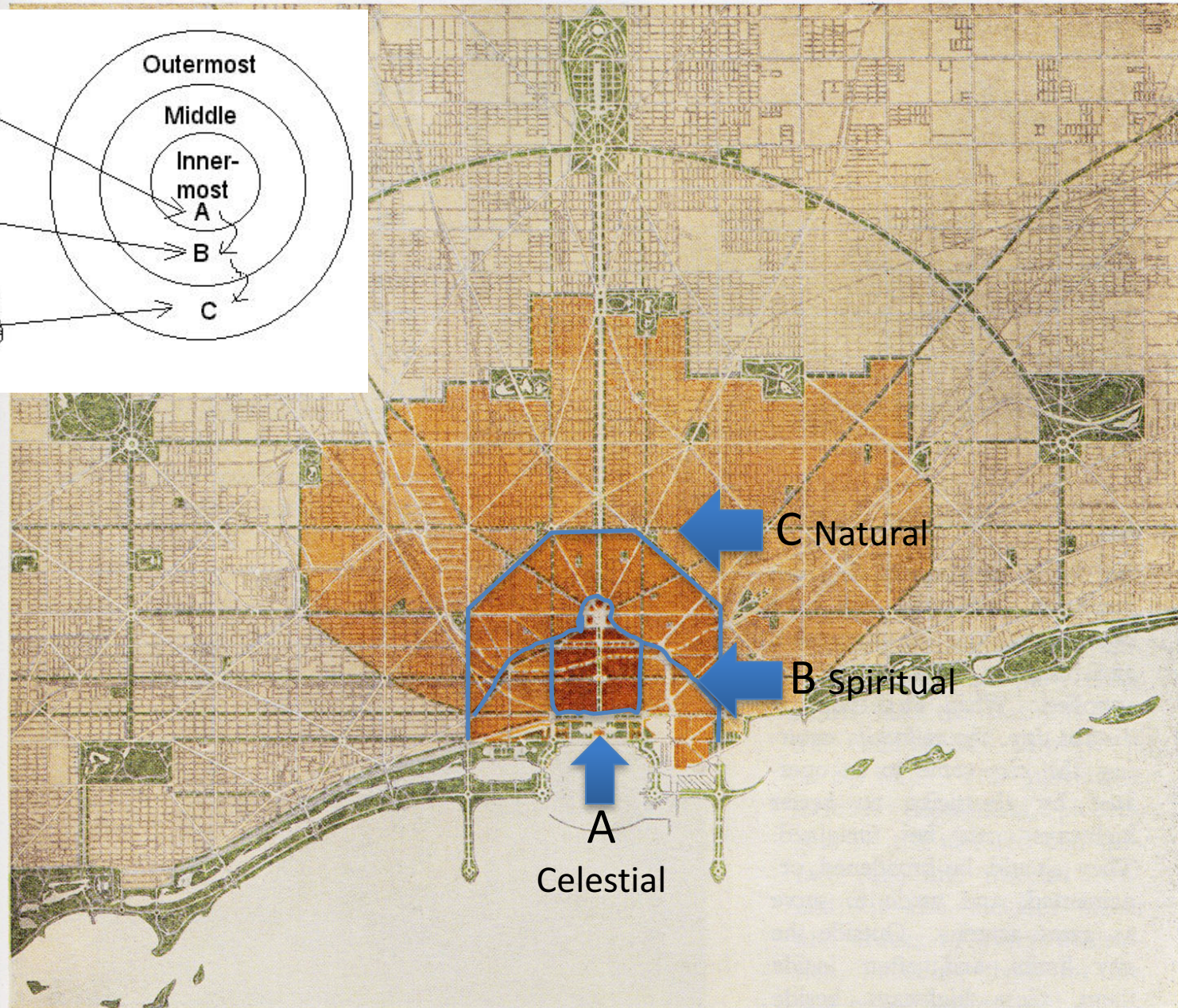
The National Mall was a City Beautiful Plan passed in 1901



Daniel Burnham and Edward H. Bennett,
Plan for Chicago, 1909



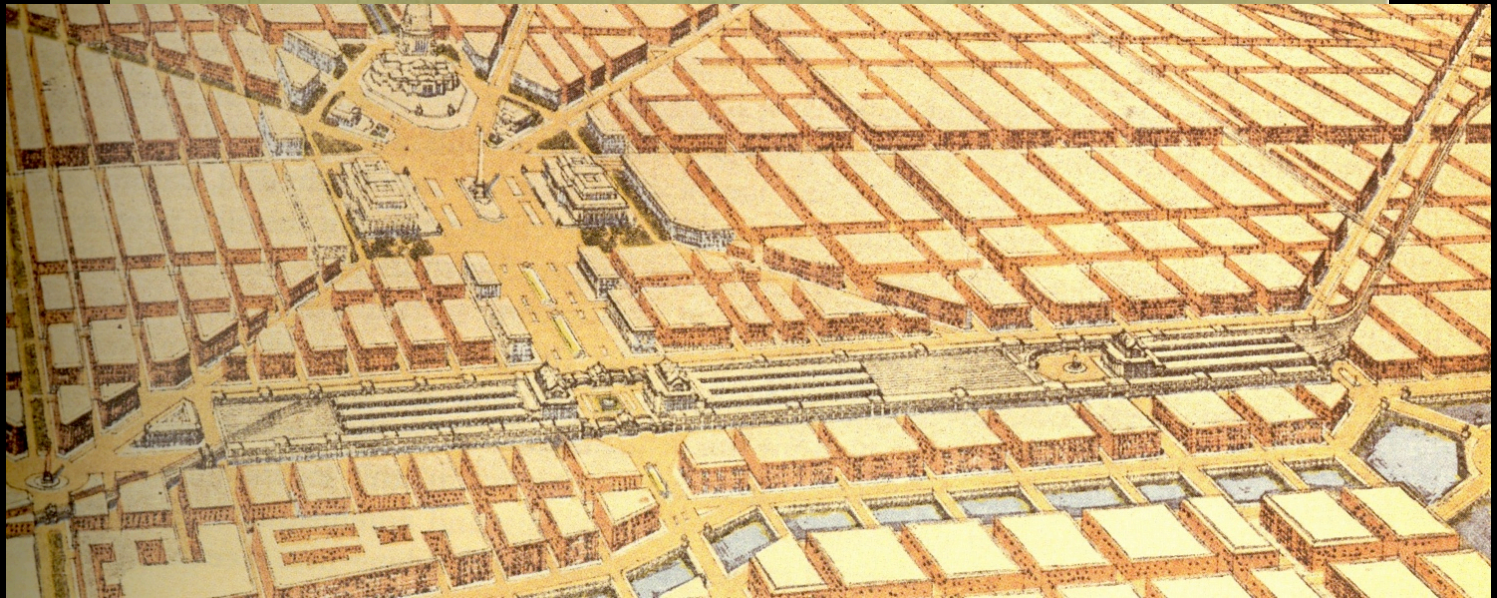
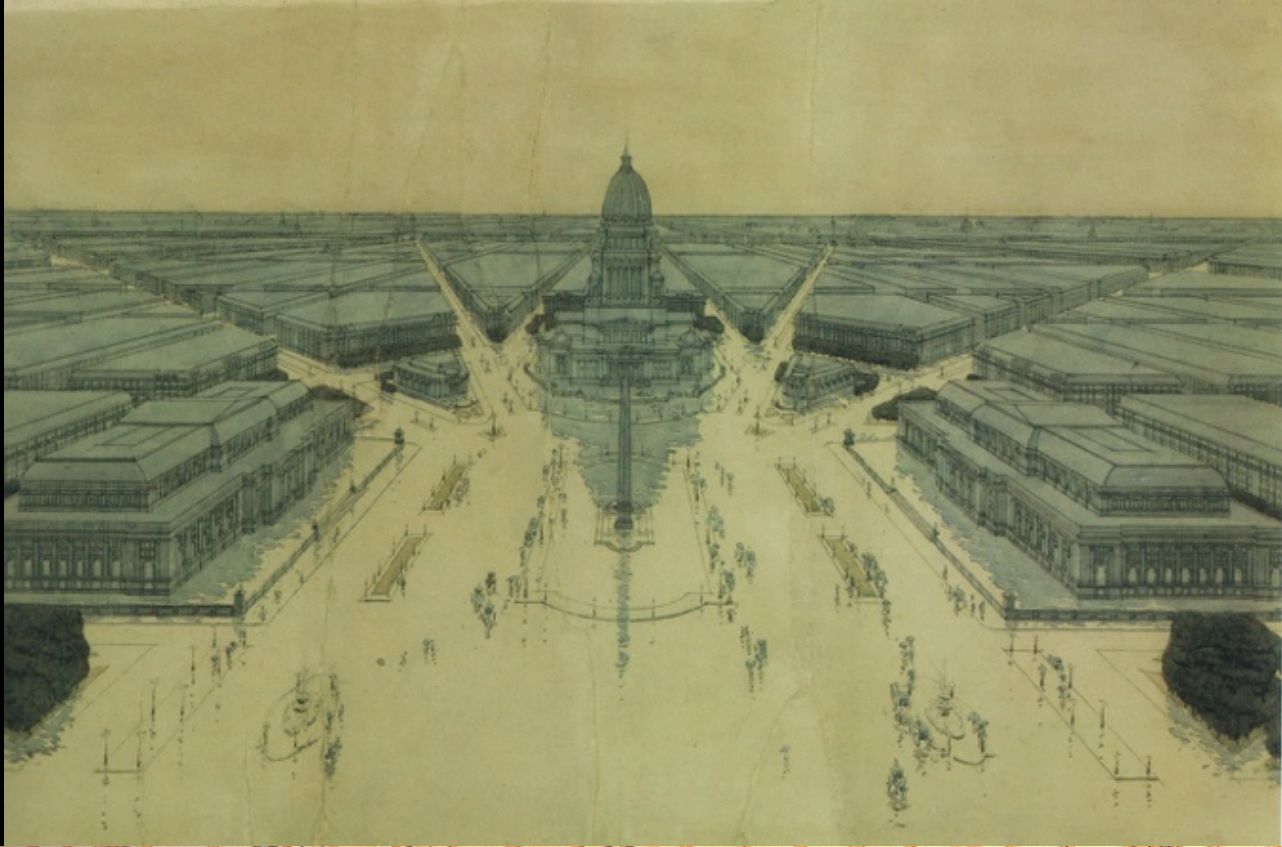
Burnham Three Heavens Correspondences according to Irving D. Fisher, 1988

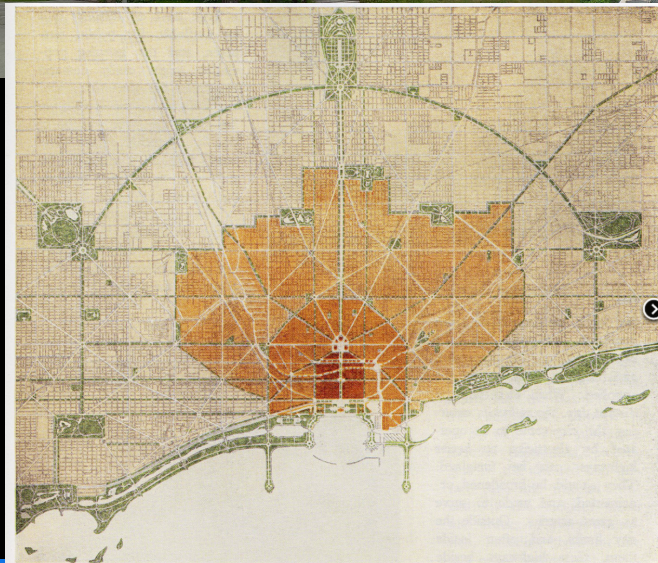


COPYRIGHT, 1909, BY COMMERCIAL CLUB OF CHICAGO

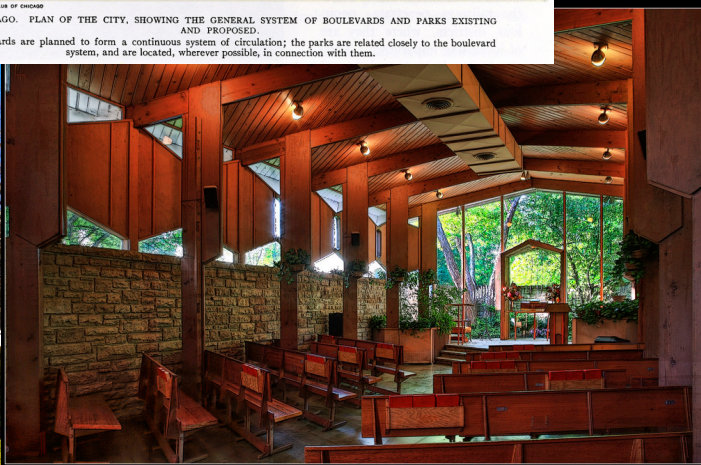
CIII. CHICAGO. PLAN OF THE CITY, SHOWING THE GENERAL SYSTEM OF BOULEVARDS AND PARKS EXISTING AND PROPOSED.

The boulevards are planned to form a continuous system of circulation; the parks are related closely to the boulevard system, and are located, wherever possible, in connection with them.





CITY OF CHICAGO. PLAN OF THE CITY, SHOWING THE GENERAL SYSTEM OF BOULEVARDS AND PARKS EXISTING AND PROPOSED. The boulevards are planned to form a continuous system of circulation; the parks are related closely to the boulevard system, and are located, wherever possible, in connection with them.





“Today, the glass cathedral of PPG Place echoes that graceful New Church structure.”
Pittsburgh New Church website